

NOTES:

APT. TYPE 1G - 2 BED / 4 PERSON		
SPACE	PROPOSED	D.S.N.A
FLOOR AREA	80.52	73
AGG. LIVING AREA	30	30
BED ROOM 01	13.4	13
BED ROOM 02	11.5	11.4
AGG. BROOM AREA	24.9	24.4
STORAGE	7.4	6
PRIVATE OPEN SPACE	7.5	7



1 02 - Second Floor - Apartment Type 1G

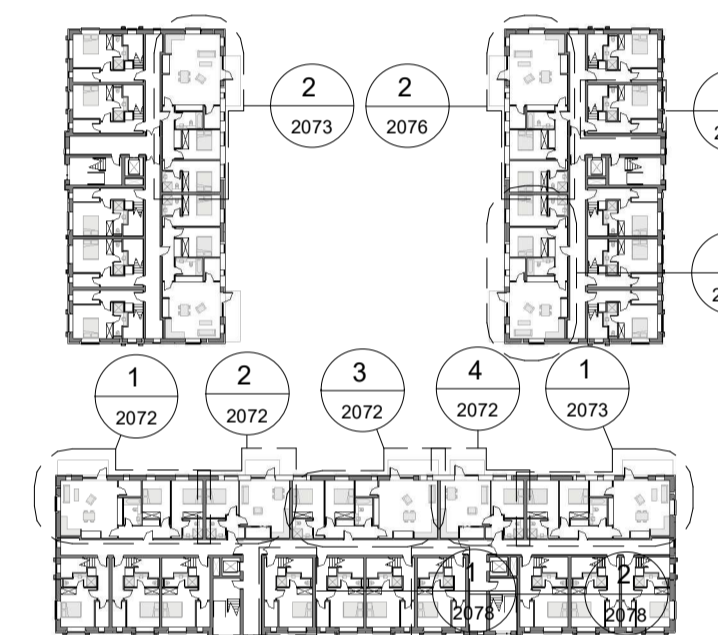
1: 50

APT. TYPE 1H - 1 BED / 2 PERSON		
SPACE	PROPOSED AREA (s.q.m)	D.S.N.A MIN. REQUIREMENT (s.q.m)
FLOOR AREA	47.34	45
AGG. LIVING AREA	24.4	23
BED ROOM 01	11.4	11.4
AGG. BROOM AREA	11.4	11.4
STORAGE	3.4	3
PRIVATE OPEN SPACE	5.1	5



2 02 - Second Floor - Apartment Type 1H

1: 50



Second Floor Key Plan

REV	DATE	SIGNED	NOTES
P01	07/12/2020	JM	Issue for Planning Application

Project Stage

Planning Application

Client

Westar Investments Ltd.

Project

Residential SHD Development @ Capdoo Clane.

Drawing Title

Proposed Block C (Duplexes/apartments - Type B) - Apartment Types 1G-1H-1J

Drawn	Checked	Scale @ A1	As indicated	Date
DS	JM			07/12/2020

Project No.	Drawing No.	Revision
PE20057	2072	P01

Drawing BIM Name:

PE20057-CWO-ZZ-ZZ-DR-A-2072

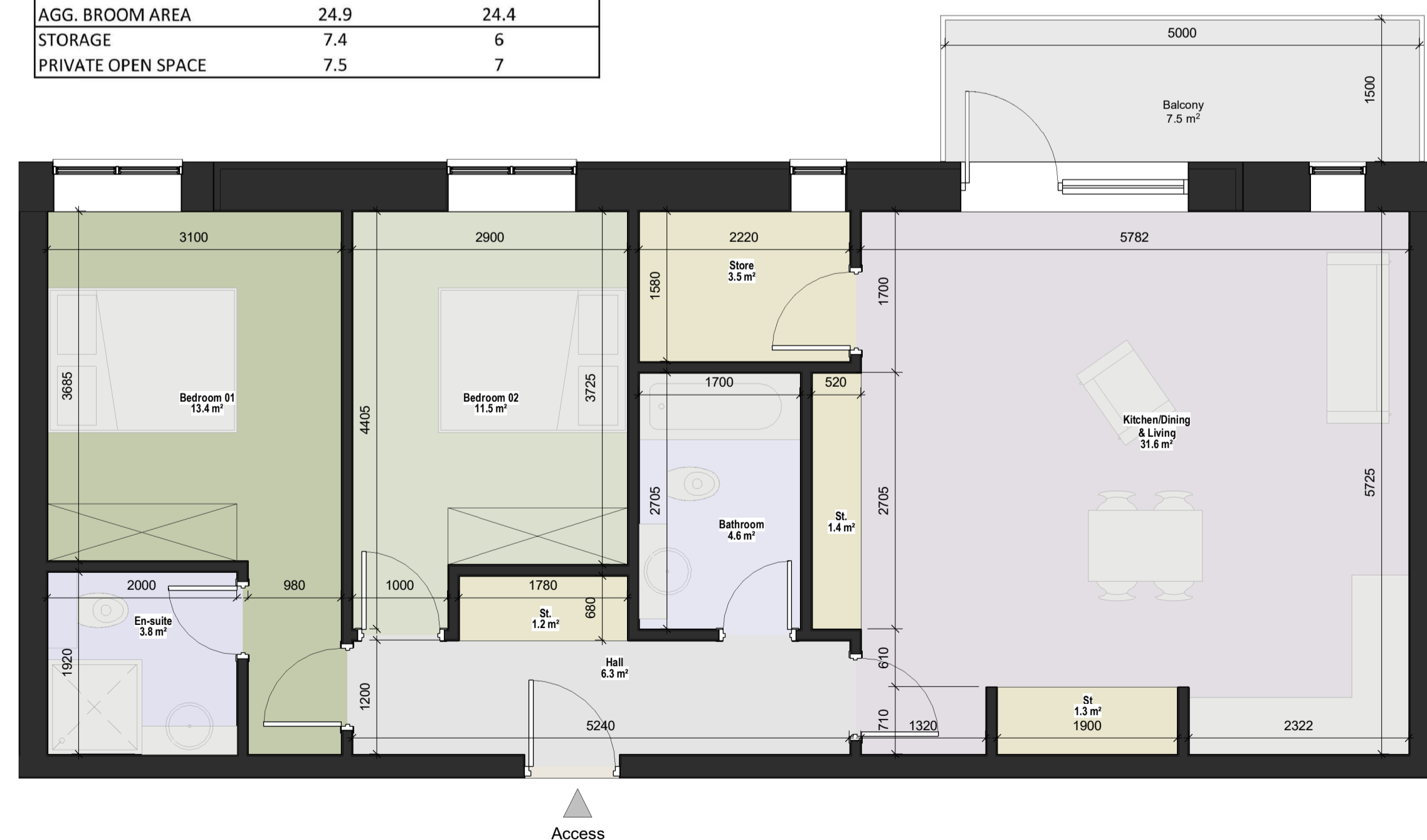
CDE Area	Suitability Code	BIM Revision
		P01.01

**C+W O'BRIEN ARCHITECTS**

1 Sarsfield Quay, Arbour Hill, Dublin 7  
t: 01 518 0170 e: admin@cwoarchitects.ie  
Dublin | London | Warwick | Manchester  
www.cwoarchitects.ie

Please consider the environment before printing this sheet

APT. TYPE 1I - 2 BED / 4 PERSON		
SPACE	PROPOSED AREA (s.q.m)	D.S.N.A MIN. REQUIREMENT (s.q.m)
FLOOR AREA	82.22	73
AGG. LIVING AREA	31.6	30
BED ROOM 01	13.4	13
BED ROOM 02	11.5	11.4
AGG. BROOM AREA	24.9	24.4
STORAGE	7.4	6
PRIVATE OPEN SPACE	7.5	7



3 02 - Second Floor - Apartment Type 1I

1: 50

APT. TYPE 1J - 1 BED / 2 PERSON		
SPACE	PROPOSED AREA (s.q.m)	D.S.N.A MIN. REQUIREMENT (s.q.m)
FLOOR AREA	47.35	45
AGG. LIVING AREA	24.4	23
BED ROOM 01	11.4	11.4
AGG. BROOM AREA	11.4	11.4
STORAGE	3.4	3
PRIVATE OPEN SPACE	5.1	5



4 02 - Second Floor - Apartment Type 1J

1: 50